

# CIH — Connected Item Hosting

Complete file control for ISS45 — at an incredibly low price

*With CIH for ISS45, you can control your entire installed base of ISS45 store files: prices, promotions — you name it!*

Finally: big-company hosting capabilities at a fraction of the cost for the independent and small chain. Instead of operating a full hosting data center to support stores, grocers can simply plug into StoreNext and grab a total hosting solution right out of the wire.

And even better, StoreNext provides special pricing so that independent chains of any size will save both acquisition and ongoing costs compared to even the lowest-priced hosting competitor.

StoreNext Connected Item (CIH) enables grocers to manage their entire item file — including pricing and promotions — from a centralized location. It is fully integrated with ISS45 and supports all of the relevant data elements, including the item file, price file, promotions engine, etc. CIH further enhances a chain's business processes by allowing users to configure several different working methods to suit each and every individual task that they may need to perform.

CIH supports the entire life cycle of an item (or promotion) starting from its creation (manually or via an automated feed from a supplier) through defining its attributes and

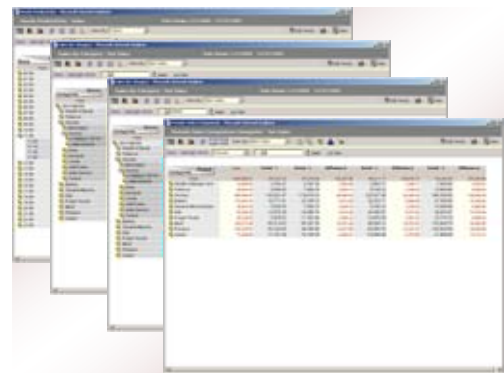
pricing information and finally with its distribution to the relevant stores in the chain.

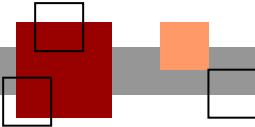
CIH also serves as the master item catalog for managing UPC files across all stores in the chain, as well as serving as a single data repository to support other Connected Services applications such as C-STAR's Reporting and Connected Electronic Journal modules.

StoreNext CIH currently provides the following primary functions:

- ✓ Item Management
- ✓ Supplier/Vendor Management
- ✓ Price Management
- ✓ Promotion Management
- ✓ Competitor Price Management
- ✓ Store Management

These capabilities are further described on the following pages, together with information about upcoming CIH capabilities.





**Item Management** — StoreNext CIH provides the complete array of functions for PLU management.

- Item Setup with extensive copy capabilities and mass item maintenance. Prevents duplicate data entry when addressing like-attributes, grouping, prices, etc.
- Full support of industry initiatives such as 14-digit UPC (GTIN) etc.
- An external staging area for new items or item updates that enables electronic data imports from supplier files (or any other third-party system).
- A user-defined “Rapid Entry” template layout to simplify the process of routine manual data entry.
- User-defined item attributes (fields) profile tailored from a library of reference attributes as well as your own created item attributes.
- Unlimited item grouping (hierarchy or flat) and categorizing for different purposes such as PoS departments, same price groups, brand/commodity families, reporting categories etc.
- Tax templates setup of by zones. The item’s tax is governed by its tax template setting, which may differ from one location to the other.
- Item discontinuation via item to store authorization mechanism.
- Item profile query and report enables detailed visibility into the item settings across the corporate as well as user defined item reports layout.

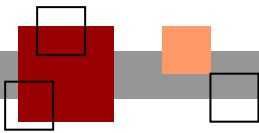
### ***Supplier/Vendor Management***

- Manual or electronic file loads for new items, costs and supplier allowances.
- User-defined supplier attributes (data fields) profile, including multiple “pay to” addresses. This feature enables easy creation of supplier attributes as the need arises to cater for data such as vendor funds, fees, rebates, accruals etc.

- Supplier authorization with assignment to specific stores.
- Multi-ordering and delivery methods per item.
- Support for setting both primary and secondary suppliers for an item/store.

### ***Price Management***

- Multi-leveled retail price settings with price type priority control (Ad, TPR, Manager’s Specials and so forth)
- Multi-leveled item cost management to support multiple allowances and allowance type settings.
- Corporate-wide and/or location-specific (zone or store) price settings. Users decide on clusters of stores for price settings and optional reporting.
- Flexible price setup tools including single item, bulk items and rapid entry.
- External Maintenance with batching capabilities for manual entry or file loads.
- Data exports into XML file formats.
- Full support of ISS45 PoS pricing capabilities, allowing users to take advantage of the ISS45 Advanced Promotions engine.
- No limitation on future and historical price settings.
- Ability to construct pricing entry methods that combine relevant – and only relevant – fields to a desired data entry workflow.
- Ability to group items together for price chaining with predefined ripple-through effect (when the price for item X changes, items Y and Z are automatically also changed).
- Full support of tiered allowances and TCR (Temporary Cost Reduction) settings with generation of TPR pricing.
- “Psychological Pricing” – Define your own price rounding rules to address different price tiers, from simple to complex.



### ***Promotion Management***

- Support of all advanced promotions setups supported by ISS45's promotional engine.
- Enables settings of promotion activation date/time.
- Supports standard/enhanced ISS45 promotions such as BOGO, LQD, and threshold-triggered promotions.
- Supports ISS45 advanced group promotions with the ability to promote and reward across clusters of items.
- Supports ISS45 "Level" type promotions that enable tiered thresholds/rewards.
- Enables uneven distribution of promotions across the corporate stores.

### ***Competitor Price Management***

- Build and maintain competitor store profiles.
- Map competitor stores to your stores.
- Load competitor prices from manual or electronic file loads that may be originated on a hand-held device.
- Automatic and/or manual item mapping.
- Competitor price comparison reporting.
- Competitor prices are separate from the chain's own price files.

### ***Store Management***

- Unlimited store grouping and zoning for price control purposes.
- Store assortment/variety control with extensive supplier/item authorization capabilities.
- User defined store attributes profile.
- Store setup with extensive copy store capability to address store grouping, special pricing and tax control.

Maintenance download to stores using generic XML file structure, easily accessed for other data extract needs. The maintenance may be split to maintenance batches based on user-defined criteria (departments, suppliers, price up/down etc.)

### ***Future Capabilities***

StoreNext will continue enhancing Connected Item Hosting with the PriceLogic™ system in the coming quarters.

PriceLogic is StoreNext's rules-based pricing simulation environment that provides automated retail price generation based on multiple user criteria. This product will be available as an enhancement to the CIH application in future versions, and will extend and replace the functions previously handled with the UNISON add-on for CIX.

PriceLogic will be providing the following:

- Defined pricing rules and rules assignment to items/categories across all stores and groupings of stores.
- Rule definition will include criteria such as target GM, competitor prices, history of performance and so forth.
- Dynamic definition of simulation structure and content.
- Easy transformation of production and/or external data into a simulation environment. This provides the ability for category managers to create "what-if" scenarios, applying to production in the live environment only when and if desired.
- Cost methods definitions will include other variables such as freight, activity based costing and so forth.
- Internal auto-pricing algorithms.
- Scheduling simulation jobs to run automatically and output a set of recommendations (i.e. "take this set of cost changes every Monday and simulate new retails").
- Auto-triggering of suggested retail prices based on sensitivity to predefined events in the price-book.

StoreNext Retail Technologies LLC  
1821 Walden Office Square  
Suite 220  
Schaumburg, IL 60173  
800.340.4425  
www.StoreNext.com

© 2004 StoreNext. All rights reserved. The StoreNext logo is a trademark of Retailix, Inc. All other trademarks or registered trademarks are the property of their respective owners.